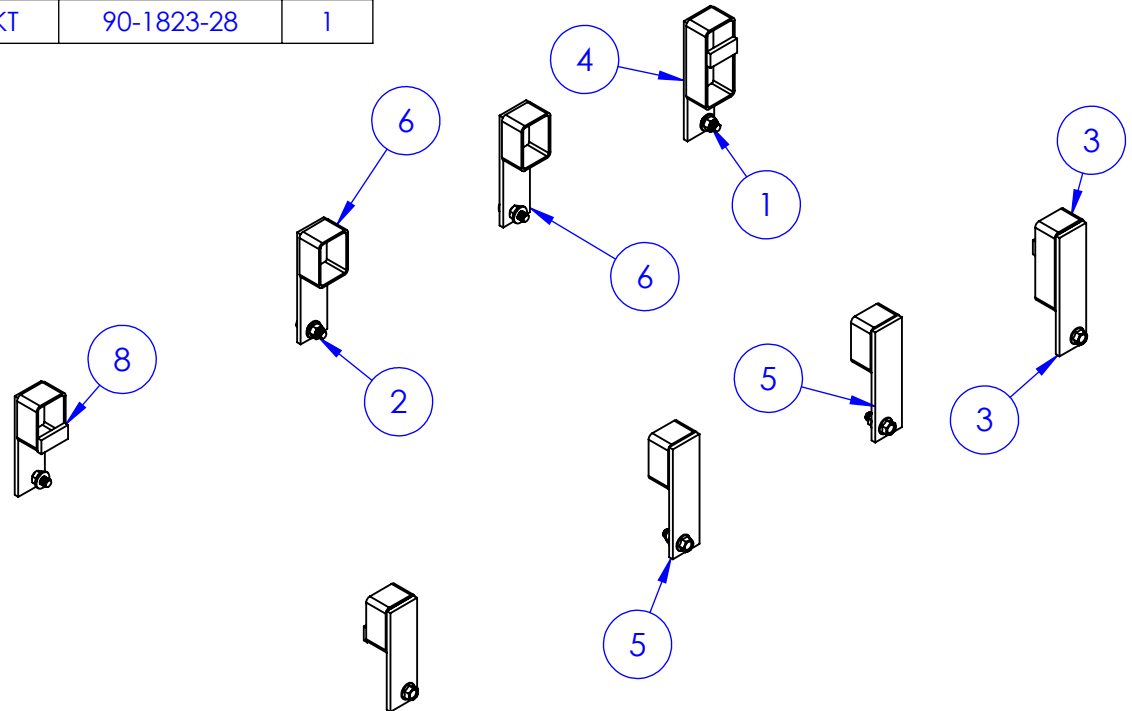
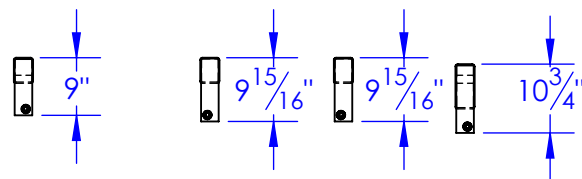
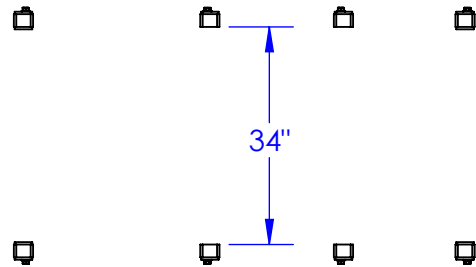


ITEM NO.	PART NUMBER	DESCRIPTION	DRAWING #	QTY.
1	BO-5/8x1-3/4 FLHCS	FLANGE HEAD BOLT 5/8x1-3/4"	STOCK	8
2	BO-5/8 HNN	LOCK NUT 5/8	STOCK	8
3	FP-DLL3-1 DS	DRIVER SIDE DLL-3 FRONT BRKT	90-1823-22	1
4	FP-DLL3-1 PS	PASSENGER SIDE DLL-3 FRONT BRKT	90-1823-22	1
5	FP-DLL3-2 DS	DRIVER SIDE DLL-3 CENTER BRKT	90-1823-24	2
6	FP-DLL3-2 PS	PASSENGER SIDE DLL-3 CENTER BRKT	90-1823-24	2
7	FP-DLL3-3 DS	DRIVER SIDE DLL-3 REAR BRKT	90-1823-28	1
8	FP-DLL3-3 PS	PASSENGER SIDE DLL-3 REAR BRKT	90-1823-28	1

REVISIONS			
REV.	DESCRIPTION	DATE	APPROVED
A	REVISED FROM DWG # 10-1829 & ADDED LL-DLL-3X TO BOM	1/22/2013	

1994-2002 DODGE
60" & 84" CAB TO AXLE
DUAL WHEEL



PROPRIETARY AND CONFIDENTIAL
THE INFORMATION CONTAINED IN THIS
DRAWING IS THE SOLE PROPERTY OF TRIPLE
C INC. ANY REPRODUCTION IN PART OR
AS A WHOLE WITHOUT THE WRITTEN
PERMISSION OF TRIPLE C INC. IS PROHIBITED.

DIMENSIONS ARE IN INCHES
TOLERANCES:
FRACTIONAL $\pm 1/16$
ANGULAR: MACH ± 1 BEND \pm
TWO PLACE DECIMAL ± 0.10
THREE PLACE DECIMAL ± 0.005

MATERIAL ---

DO NOT SCALE DRAWING

NAME	DATE
DRAWN HEATH	1/23/2013
PART # LL-DLL-3	
ASM #	

COMMENTS:
**LEVEL LOK
DODGE
TYPE 3**

P.O. BOX 248,
SABETHA, KS 66534



SIZE	DWG. NO.	REV.
A	90-1823	A
SCALE: 1:30	WEIGHT: 36.54	SHEET 1 OF 1

GENERAL INSTRUCTIONS AND CAUTIONS

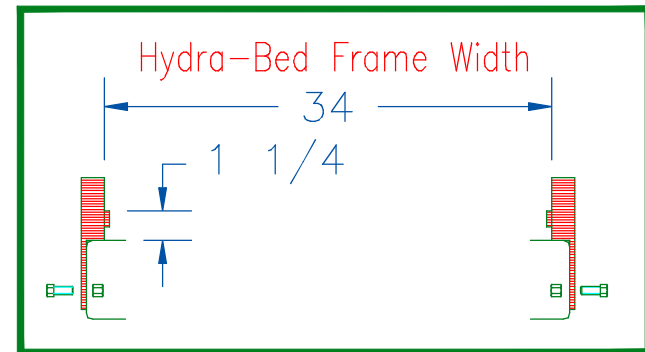
Note: When welding, attach welder ground only to Hydra-Bed, not to truck frame. Use low-hydrogen rod or wire electrode. NEVER weld to the frame of the truck. Correct installation of the Level-Lok system assures Front to Rear and Side to Side leveling as well as Left to Right centering of the Hydra-Bed. Never obstruct factory overload spring mounting locations.

When drilling truck frame, do not damage any part of the braking, fuel or electrical systems.

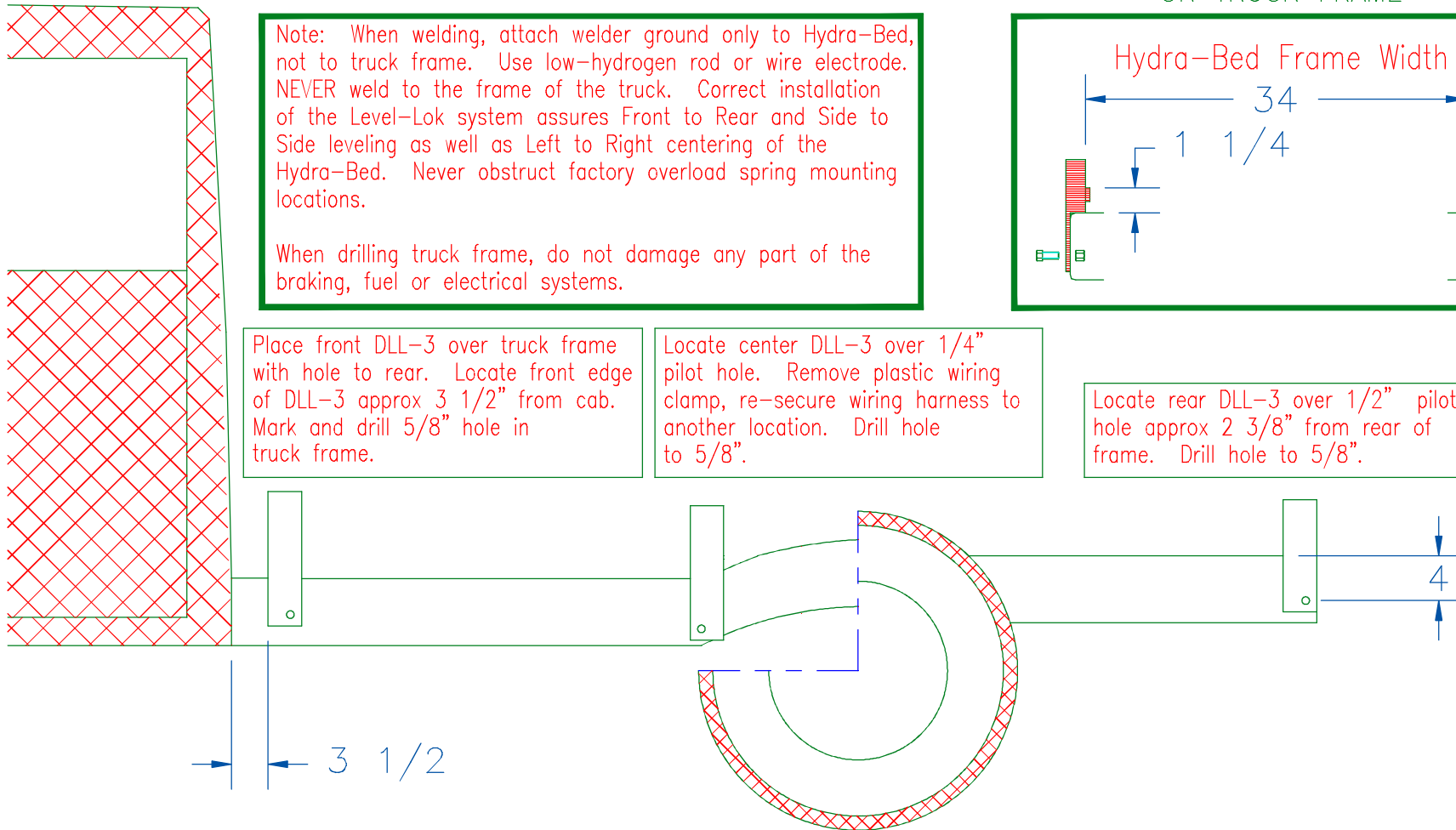
Place front DLL-3 over truck frame with hole to rear. Locate front edge of DLL-3 approx $3 \frac{1}{2}$ " from cab. Mark and drill $\frac{5}{8}$ " hole in truck frame.

Locate center DLL-3 over $\frac{1}{4}$ " pilot hole. Remove plastic wiring clamp, re-secure wiring harness to another location. Drill hole to $\frac{5}{8}$ ".

VIEW OF REAR LEVEL-LOKS ON TRUCK FRAME



Locate rear DLL-3 over $\frac{1}{2}$ " pilot hole approx $2 \frac{3}{8}$ " from rear of frame. Drill hole to $\frac{5}{8}$ ".



DLL-3 1994-2002 Dodge
60" & 84" Cab to Axle Dual Wheel

Kit contains 8 strap assemblies. Use 3 strap assemblies per side when mounting an HB 2X0.